



# SmarTools CAM Updater

User's guide

June 2007 Version 1.00

## 1. Minimum requirement

- Computer with a free PC-Card slot
- Microsoft Windows 2000 or XP
- 1MB free hard disk space

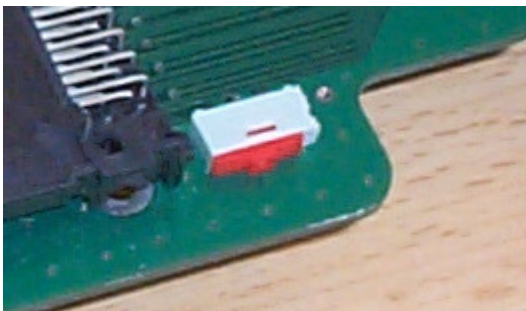
## 2. CAM insertion

Please insert your CAM (Conditionnal Access module) in the extender and please insert the extender in a free PC-Card slot.



Note: Some laptops are able to detect CAM without extender. If when you insert the CAM without extender, you get no windows message like "new device detected" or PCMCIA-MTD-002 plug and play string, you need to use the extender. Two extenders are delivered in the package.

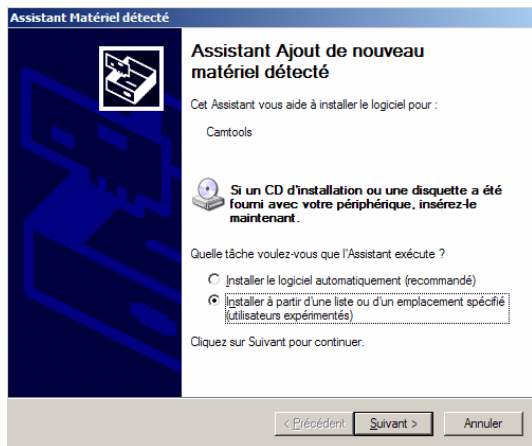
Note: Two version of extender are available. If the extender you got has a switch (see picture above), please be sure that the switch is set on the left like on the picture.



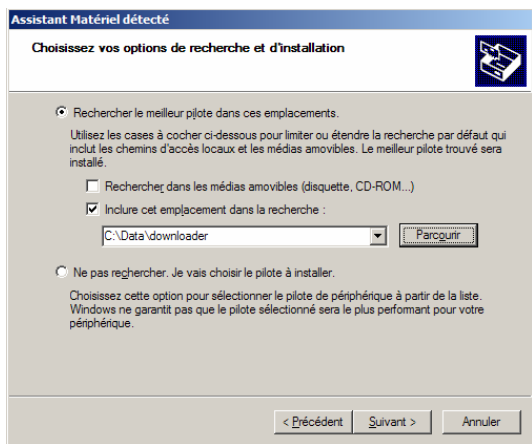
## 3. Driver installation

After module insertion, windows should open this window. Please select "Setup from a list or a specific location (advanced users)". Then, next.

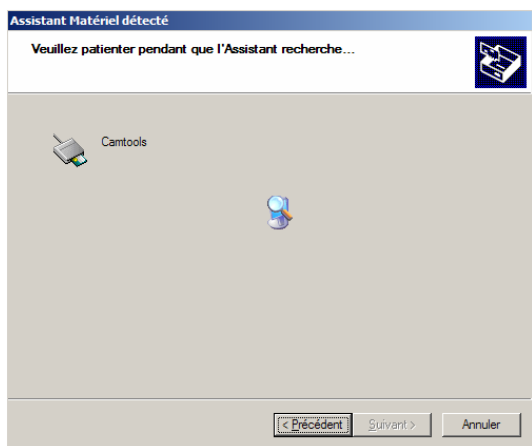
**Warning: if your computer detects "PCMCIA-MTD-002", you must use the CAM adapter.**



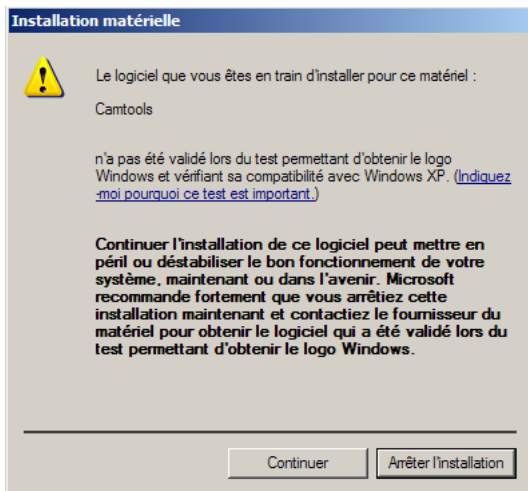
Select "look for the best driver in those locations". Please browse your computer to set the folder where you have unzip the file downloaded from the web. Then next.



Your computer will search for a drivers.



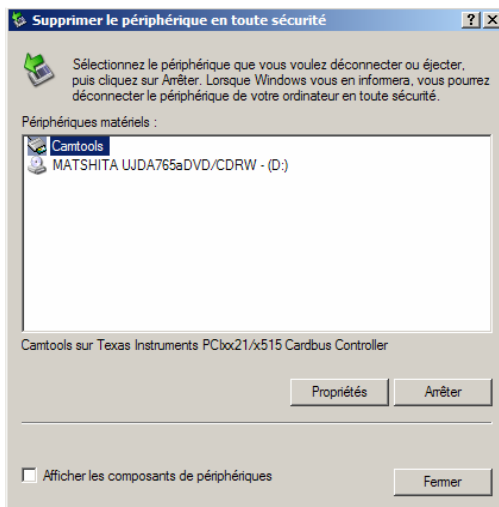
When the driver has been found, you should get (only for Microsoft Windows XP users) this message. Please select Continue.



Now, your driver is well setup. You can see your CAM in the task bar, by double-clicking on the green arrow has shown below

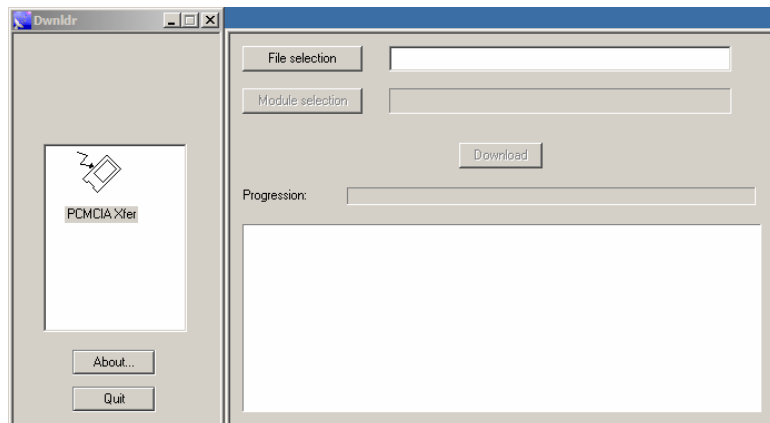


You CAM is listed as Camtools.

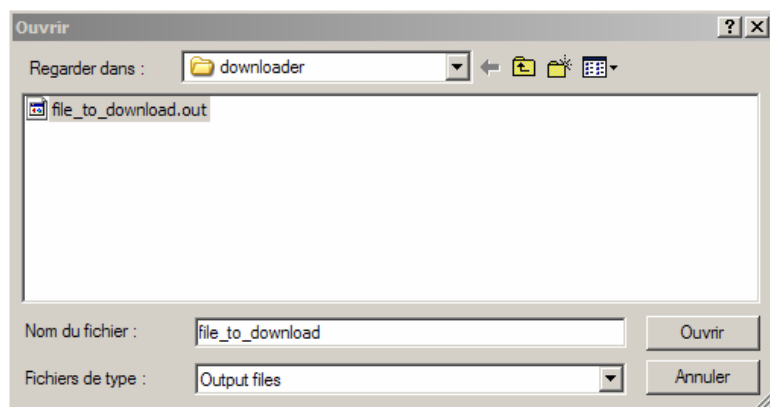


## 4. Download process

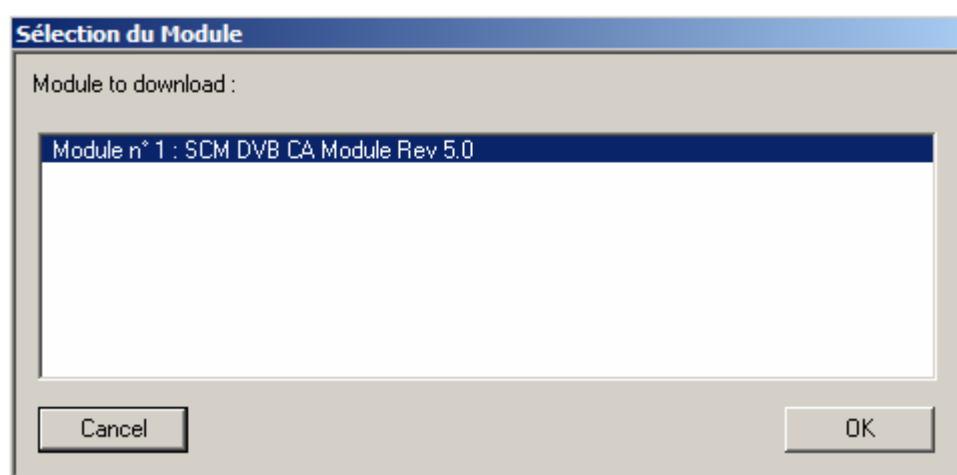
Please launch downloader 2.0 application. The following window will be opened.



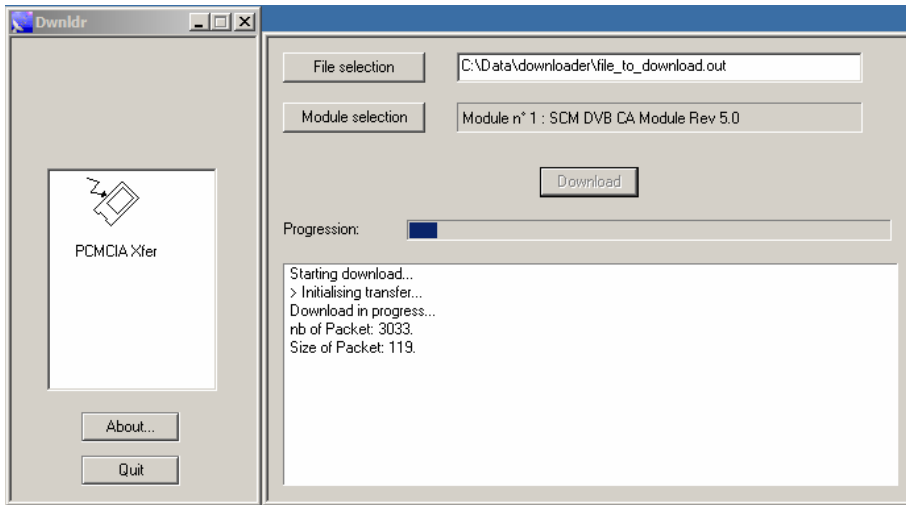
Open file selection and look for the folder where you have unzipped the file download on SmarDTV website. Look for the file with ".out" extension, and then open it.



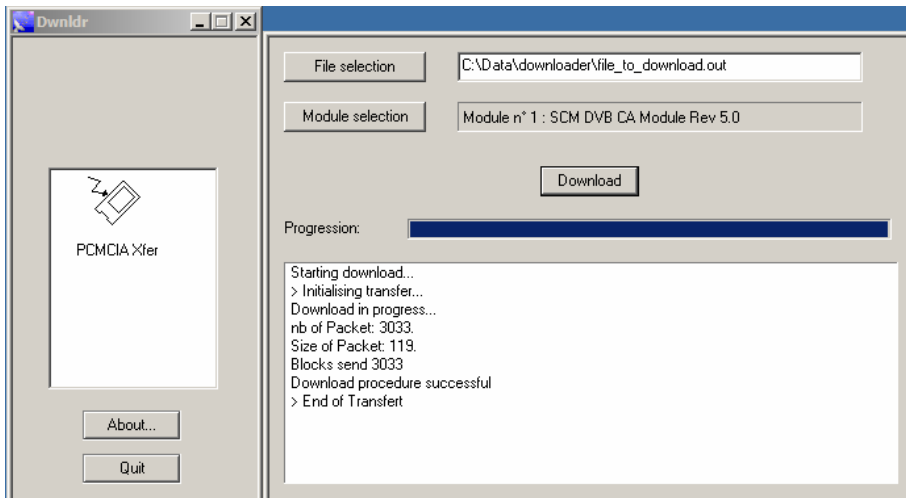
Now, you have to select the module you will download. Select the SCM DVB CA Module and OK.



Now, you can start your download. The download may take a few minute and never extract the module or power down your computer until download is finished otherwise your CAM will not work anymore.



When the download is finished, you should get the message: "Download procedure successful > End of transfer". Now, you can extract your module and insert it your decoder.



## Contact

### Email

If you have any question or request about this document, please contact SmarDTV support team at [support@smardtv.com](mailto:support@smardtv.com) or on the web at [www.smardtv.com](http://www.smardtv.com).